

OLYMPUS®

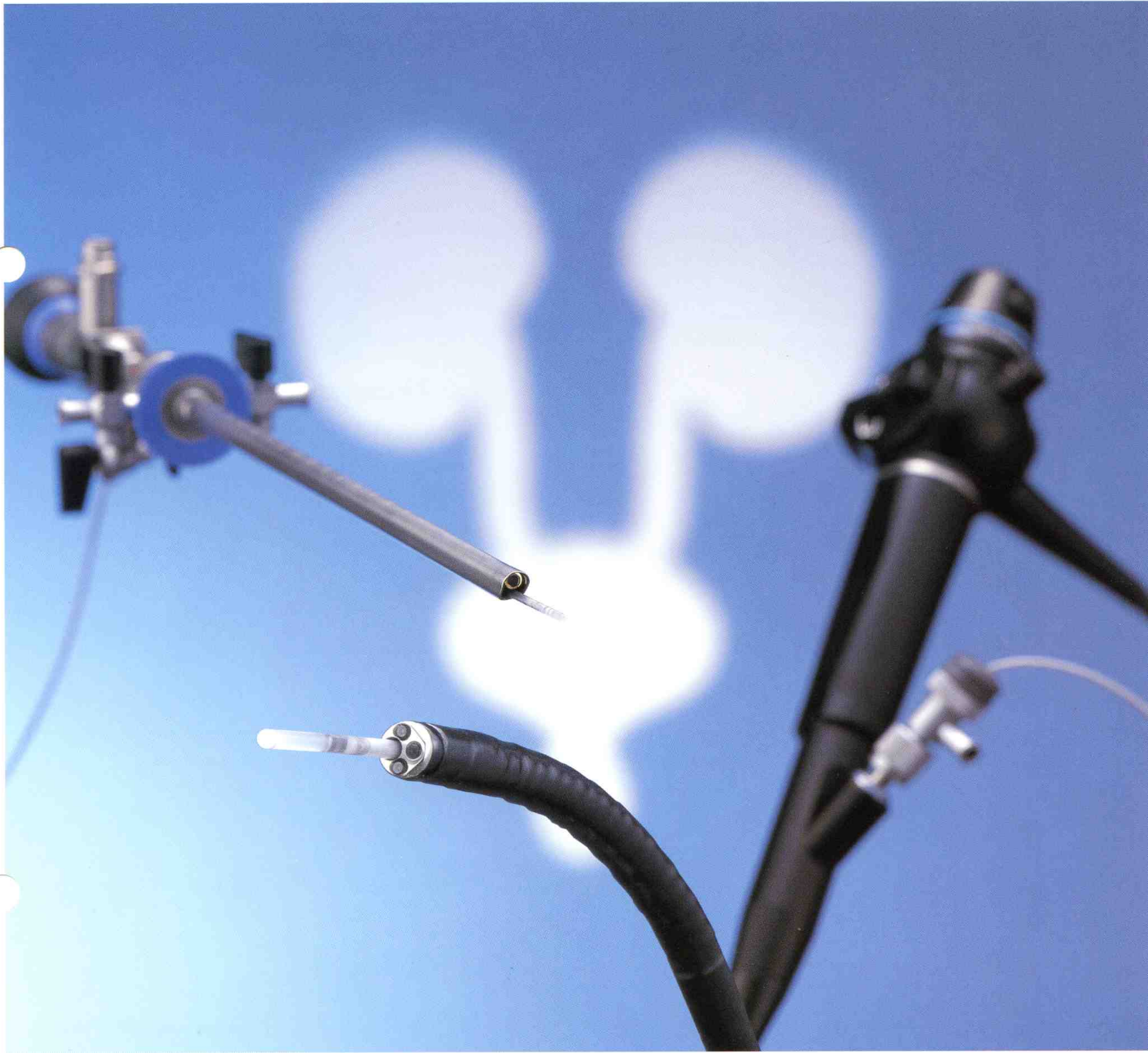
ULTRASONIC
PROBES

Olympus is about life. About photographic innovations that capture precious moments of life. About advanced medical technology that saves lives. About information- and industry-related products that make possible a better living. About adding to the richness and quality of life for everyone. Olympus. Quality products with a **FOCUS ON LIFE**

**NEW
PRODUCT**

ULTRASONIC PROBES
UM-S20-20R/UM-2R/UM-3R

Bringing The Benefits Of Endoscopic Ultrasonography To Urology

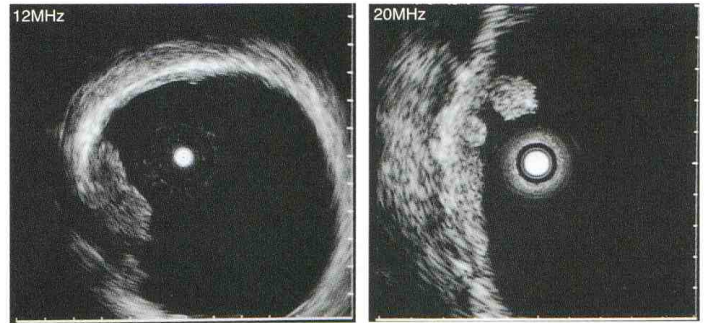


An Expanded Line Of Ultrasonic Probes That Takes You Beyond The Urethra, Bladder, Ureter, And All The Way To The Renal Pelvis

ULTRASONIC PROBES

UM-S20-20R/UM-2R/UM-3R

Endoscopic ultrasonography is proving itself one of today's most powerful imaging technologies. But its applications remained limited. Now Olympus, the world's leading manufacturer of comprehensive endoscopic products, is bringing it's cutting-edge technology to Urology. Our new line of ultrasonic probes – the UM-S20-20R, UM-2R and UM-3R – make it possible to quickly observe abnormality throughout the urinary tract, including the urethra, bladder, ureter as well as renal pelvis.



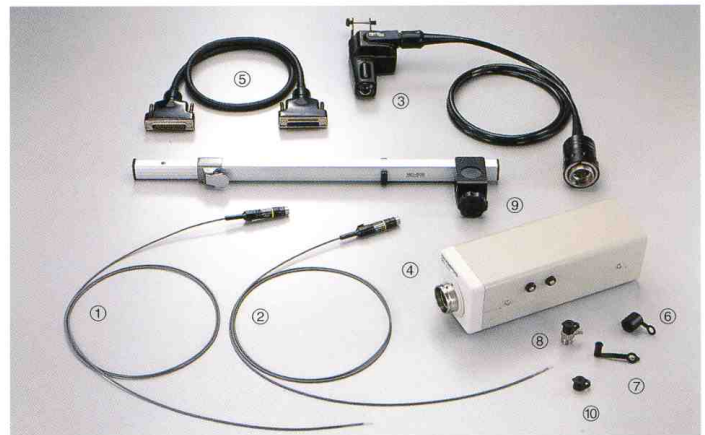
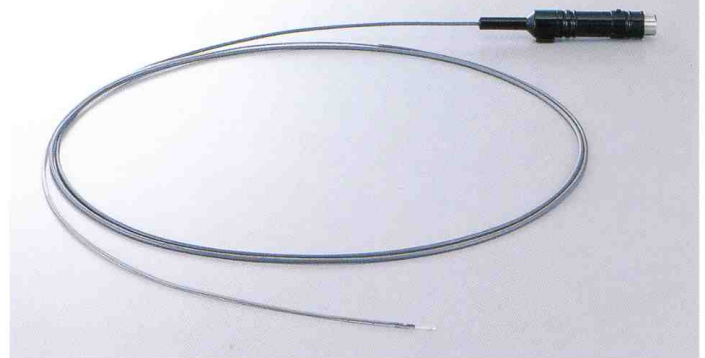
Bladder Abnormality

Features

- 1) The UM-2R/3R can be used with rigid cystoscopes that allow a passage of 9Fr. instruments.
- 2) The UM-2R provides penetration of 12MHz ultrasound images while UM-3R and UM-S20-20R offer high-resolution of 20MHz ultrasound images.
- 3) 850mm long, with a diameter of only 1.7mm at distal end and insertion tube maximum diameter of 2.0mm, allows the UM-S20-20R to insert to flexible and rigid cystoscopes.
- 4) The UM-S20-20R can also work with the Olympus OES4000 Ureteroscopes. The A2942A scope has a 430mm working length and 6.6Fr. channel diameter that can be inserted into the ureter.
- 5) Allows you to easily perform ultrasonography in routine examinations when combined with the EU-M30 or EU-M20 Endoscopic Ultrasound Center.

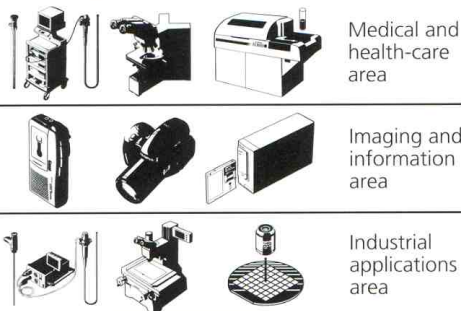
Specifications

	UM-S20-20R	UM-2R/3R
Display Mode	B-Mode	
Scanning Method	Mechanical, Radial Scanning	
Scanning Direction	Perpendicular to the direction of insertion, 360°scanning	
Frequency	20MHz	12MHz(UM-2R) 20MHz(UM-3R)
Working Length	2050mm	
Total Length	2140mm	
Insertion Tube Outer Diameter	1.7mm(Distal end side 850mm) 2.0mm(proximal side)	2.4mm(max.2.5mm)
Max. Outer Diameter	2.0mm	2.5mm
Channel Inner Diameter(Endoscope)	2.0mm min.	2.8mm min.
Channel Capacity(Rigid cystoscope)	7Fr.min.	9Fr.min.



① Ultrasonic Probe UM-2R ② Ultrasonic Probe UM-3R ③ Probe Driving Unit MH-240
④ Pulse Unit MH-241 ⑤ EU-M20 Cord MH-242 ⑥ Water Resistant Cap MH-244(x2)
⑦ Probe Holder MH-245(x2) ⑧ Probe /Irrigation Plug (T-Plug)MD-807
⑨ Supporting Arm MD-808 ⑩ Semi-Disposable Biopsy Valve MB-358(x10)
Note: Ultrasonic Probe Set MH-247 without ④ and ⑤ is available for EU-M30.

Olympus business areas



OLYMPUS®

FOCUS ON LIFE

OLYMPUS OPTICAL CO.,LTD.
San-Ei Building, 22-2, Nishi Shinjuku 1-chome, Shinjuku-ku, Tokyo, Japan
OLYMPUS OPTICAL CO. (EUROPA) GMBH.
Postfach 10 49 08, 20034 Hamburg / Wendenstrasse 14-16, 20097 Hamburg, Germany
OLYMPUS AMERICA INC.
2 Corporate Center Drive, Melville, N.Y. 11747-3157, U.S.A.
OLYMPUS KEYMED
Keymed House, Stock Road, Southend-on-Sea, Essex SS2 5QH, England
OLYMPUS SINGAPORE PTE LTD.
491B River Valley Road #12-01/04, Valley Point Office Tower, Singapore 248373
OLYMPUS BEIJING REPRESENTATIVE OFFICE
Room No. 3406 Beijing Jing Guang Centre, Hu Jia Lou, Chao Yang Qu, Beijing, China
OLYMPUS MOSCOW CORPORATION
117071, Moscow, Malaya Kaluzhskaya 19, bld. 1, fl.2, Russia
OLYMPUS AUSTRALIA PTY. LTD.
1/104 Ferntree Gully Road, Oakleigh, VIC 3166, Australia