

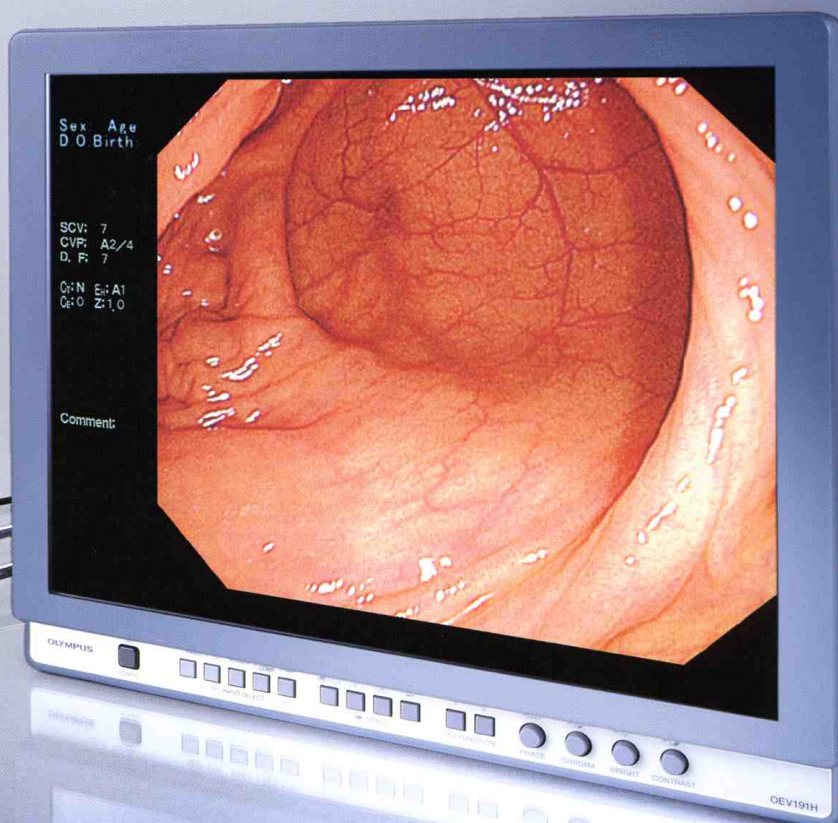
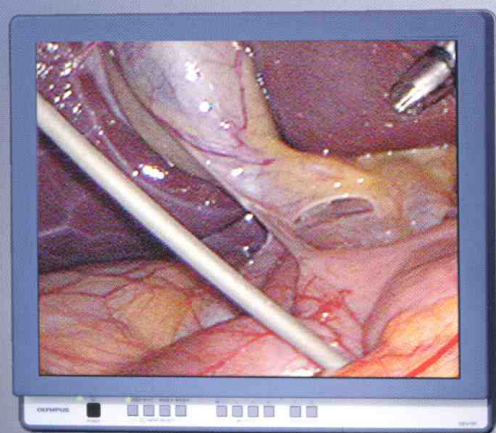
OLYMPUS®

Your Vision, Our Future

HIGH DEFINITION LCD MONITOR / LCD MONITOR

OEV191H/191

Ideal for use with Olympus endoscopes, the latest flat-panel LCD monitors deliver high-resolution images with accurate color reproduction



The Right Choice for Endoscopic Applications

To be effective, endoscopy requires the best possible reproduction of the subtle textures of internal tissue. If high-quality video signals are captured by your scope, you will need an equally high-quality monitor for the optimal viewing experience. To complement our high-performance scopes, Olympus has developed two new 19-inch LCD thin-panel monitors specifically for endoscopic applications — the OEV191H with HDTV compatibility, and the OEV191 with enhanced high-resolution performance. Not only do these monitors offer you excellent picture quality, their slim, space-saving designs help reduce clutter in your endoscopy suite or operating room.

Main Features

- Full-digital HDTV compatible super-high-resolution images with stable, flicker-free image quality (OEV191H).
- Superb high-resolution imaging performance with exceptional image quality (OEV191).
- Large 19-inch LCD screen with 1280 x 1024 native resolution provides clear, easy-to-see images.
- Progressive scanning minimizes distortion and flicker.
- Space-saving – the monitors have a thin, flat, streamlined design.
- Anti-glare coating to minimize reflection.
- Enhancement function to increase image sharpness.
- Lower power consumption than conventional CRT monitors of equivalent size



HIGH DEFINITION LCD MONITOR
OEV191H



LCD MONITOR
OEV191



MAJ-1431 HD/SD-SDI Adapter

Will facilitate quick access to future HDTV-compatible devices

Model name		OEV191H	OEV191
LCD panel	Screen size	19.0 inches	
	Display devices	TFT active matrix	
	Display dots	1280 x 1024 dots (SXGA)	
	Field angle	Vertical: 85° , Horizontal: 85° (In the area with contrast of 10:1 or more)	
Power supply	Voltages	100-120 V/ 220-240 V AC	
	Frequency	50/ 60 MHz	
	Power consumption	125 VA	
Size	Dimensions	430 (W) x 386 (H) 95 (D) mm	
	Weight	8.0 kg	
Input	VIDEO input signal format	Composite (BNC connectors), 480/59.94I (NTSC), 576/50I (PAL)	
	Y/C input signal format	4-pin mini-DIN (Y/C) connector, 480/59.94I (NTSC), 576/50I (PAL)	
	Analog RGB + EXT-Sync/ YPbPr_A signal format	BNC connector (x4) RGB: 480/59.94I, 480/59.94P, 576/50I, 576/50P, 720/59.94P, 720/60P, 1080/60I, 1080/59.94I, 1080/50I	BNC connector (x4) RGB: 480/59.94I, 480/59.94P, 576/50I, 576/50P
	Analog RGB + EXT-Sync/ YPbPr_B signal format	YPbPr: 480/59.94I, 480/59.94P, 576/50I, 576/50P, 720/59.94P, 720/60P, 1080/60I, 1080/59.94I, 1080/50I	YPbPr: 480/59.94I, 480/59.94P, 576/50I, 576/50P
	REMOTE1 connector (parallel remote)	D-Sub 9-pin (x1)	
	RS232C connector (serial remote)	D-Sub 9-pin (x1)	
	COMPUTER connector (Analog RGB input) /signal format	HD D-Sub 15-pin (x1) VGA: 640 x 480, 60 Hz, 640 x 400, 70 Hz SVGA: 800 x 600, 60 Hz XGA: 1024 x 768, 60/70/75/85 Hz	Not available
	*Connected to the OLYMPUS endoscopic ultrasound centers only		
	HD/SD SDI input	Possible with the MAJ-1431 HD/SD SDI Adapter (option) 480/59.94I, 576/50I, 720/59.94P, 720/60P, 1080/60I, 1080/59.94I, 1080/50I	Not available
	Output	VIDEO output signal format	BNC connector (x1) With loop-through output and auto 75 Ω termination
Y/C output signal format		Y/C out4-pin mini-DIN connector With loop-through output and auto 75 Ω termination	
Analog RGB + EXT-Sync/ YPbPr_A signal format		BNC connector (x4) With loop-through output and auto 75 Ω termination	
HD/SD SDI output		Possible with the MAJ-1431 HD/SD SDI Adapter (option) With active-through output and auto 75 Ω termination	Not available
Setting memory	Held even after the POWER switch is set to off.		
EMC (Electromagnetic compatibility)	This instrument complies with IEC60601-1-2:2001 provided that it is combined with the equipment complying with applicable EMC standards. Emission: Class B (CISPR11)		

Specifications, design and accessories are subject to change without any notice or obligation on the part of the manufacturer.

OLYMPUS[®]

OLYMPUS MEDICAL SYSTEMS CORP.
Shinjuku Monolith, 3-1 Nishi-Shinjuku 2-chome, Shinjuku-ku, Tokyo 163-0914, Japan
OLYMPUS MEDICAL SYSTEMS EUROPA GMBH
Postfach 10 49 08, 20034 Hamburg / Wendenstrasse 14-18, 20097 Hamburg, Germany
OLYMPUS AMERICA INC.
3500 Corporate Parkway, P.O. Box 610, Center Valley, PA 18034-0610, U.S.A.
OLYMPUS SURGICAL & INDUSTRIAL AMERICA INC.
One Corporate Drive, Orangeburg, New York 10962, U.S.A.
OLYMPUS LATIN AMERICA, INC.
5301 Blue Lagoon Drive, Suite 290 Miami, Florida 33126-2097, U.S.A.
OLYMPUS KEYMED GROUP LTD.
Keymed House, Stock Road, Southend-on-Sea, Essex SS2 5QH, England

OLYMPUS SINGAPORE PTE LTD.
491B River Valley Road #12-01/04, Valley Point Office Tower, Singapore 248373
OLYMPUS HONG KONG AND CHINA LIMITED
L43, Office Tower, Langham Place, 8 Argyle Street, Mongkok, Kowloon, Hong Kong
OLYMPUS (BEIJING) SALES & SERVICE CO., LTD.
Room 1202, NCI Tower, A12 Jianguomenwai Avenue Chaoyang District Beijing, 100022, China
OLYMPUS MOSCOW LIMITED LIABILITY COMPANY
117071, Moscow, Malaya Kaluzhskaya 19, bld. 1, fl. 2, Russia
OLYMPUS AUSTRALIA PTY LTD
31 Gilby Road, Mount Waverley, VIC., 3149, Australia
OLYMPUS KOREA CO., LTD.
4F, 5F, Gyeongnam Bldg., 157-27, Samseong-dong, Gangnam-ku, Seoul, Korea

www.olympus.com

Printed in Japan F1120SB-0508