

OLYMPUS®

Your Vision, Our Future

EVIS EXERA II 165 Series

EVIS
EXERA II

EVIS
EXERA II

Specifications, design and accessories are subject to change without any notice or obligation on the part of the manufacturer.

OLYMPUS®

www.olympus.com

OLYMPUS MEDICAL SYSTEMS CORP.
Shinjuku Monolith, 3-1 Nishi-Shinjuku 2-chome, Shinjuku-ku, Tokyo 163-0914, Japan
OLYMPUS MEDICAL SYSTEMS EUROPA GMBH
Postfach 10 49 08, 20034 Hamburg / Wendenstrasse 14-18, 20097 Hamburg, Germany
OLYMPUS AMERICA INC.
2 Corporate Center Drive, Melville, N.Y. 11747-3157, U.S.A.
OLYMPUS LATIN AMERICA, INC.
6100 Blue Lagoon Drive, Suite 390 Miami, Florida 33126-2087, U.S.A.
KEYMED LTD.
Keymed House, Stock Road, Southend-on-Sea, Essex SS2 5QH, England

OLYMPUS SINGAPORE PTE LTD.
491B River Valley Road #12-01/04, Valley Point Office Tower, Singapore 248373
OLYMPUS HONG KONG AND CHINA LIMITED
Room 1520-1527, Ocean Centre, 5 Canton Road, Tsimshatsui, Kowloon, Hong Kong
OLYMPUS (BEIJING) SALES & SERVICE CO., LTD.
Room 1401, East Tower, Gong Yuan No.6 Road Palace, No.6 Gong Yuan Road, JiaoQuoXie, DongCheng District, Beijing, 100005, China
OLYMPUS MOSCOW LIMITED LIABILITY COMPANY
117071, Moscow, Malaya Kaluzhskaya 19, bld. 1, fl.2, Russia
OLYMPUS AUSTRALIA PTY LTD
31 Gilby Road, Mount Waverley, VIC., 3149, Australia

*Enhanced imaging performance and
scope performance offer practical solutions
for gastrointestinal endoscopy*

EVIS EXERA II

*Introducing the Olympus EVIS EXERA II 165 Series system.
Simple and practical, EVIS EXERA II 165 boasts
enhanced imaging with improved image quality and
advanced structure enhancement capability,
as well as enhanced scope performance with slimmer design,
auxiliary water jet, and more.
Supported by an impressive array of versatile
convenience functions such as digital output,
annotation, and index display,
the EVIS EXERA II 165 Series is today's smart choice for
gastrointestinal endoscopy.*



*Enhanced imaging performance and
scope performance offer practical solutions
for gastrointestinal endoscopy*

EVIS EXERA II

*Introducing the Olympus EVIS EXERA II 165 Series system.
Simple and practical, EVIS EXERA II 165 boasts
enhanced imaging with improved image quality and
advanced structure enhancement capability,
as well as enhanced scope performance with slimmer design,
auxiliary water jet, and more.
Supported by an impressive array of versatile
convenience functions such as digital output,
annotation, and index display,
the EVIS EXERA II 165 Series is today's smart choice for
gastrointestinal endoscopy.*



Improved image quality, advanced structure enhancement capability, and full-height display, together with improved scope design, make this system your most practical choice

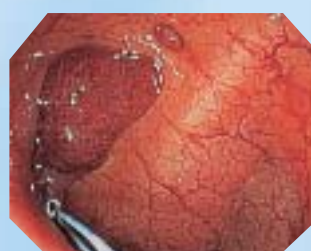
Imaging Performance

When it comes to imaging performance, the EVIS EXERA II 165 Series is anything but ordinary. In comparison with the previous system, picture quality has been improved dramatically. Images are sharp and clear from edge to edge with accurate reproduction of fine capillaries and subtle mucosal structures.

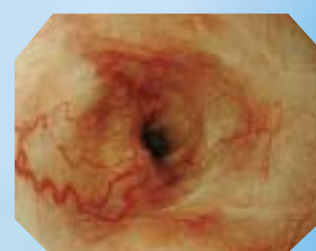
Improved image quality and advanced structure enhancement

Offering the kind of clarity and sharpness you would normally expect from a higher-end endoscopy system, the EVIS EXERA II 165 Series features a remarkable improvement in image quality. You'll notice it right away, especially in still images. That quality is supported by sophisticated structure enhancement circuitry that highlights subtle tissue textures and slight color variations on the mucosa by electronically sharpening the endoscopic image, while suppressing noise. The combination of these improvements with an easy-viewing, full-height display makes the EVIS EXERA II 165 Series ideal for observation of vascular and mucosal structures with high contrast.

Structure enhancement images



Upper gastrointestinal tract

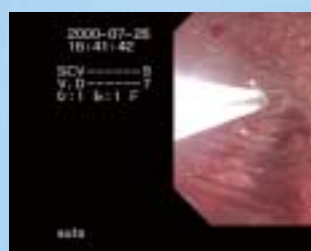


Lower gastrointestinal tract

Automatic iris

This convenient automatic iris minimizes the need to adjust the light metering system when different types of surfaces are encountered during a procedure.

When using forceps



Angulus, etc.



Structure Enhancement



Scope Performance

When it comes to scope performance, both the upper and lower EVIS EXERA II 165 Series scopes offer a level of maneuverability and functionality that makes them a practical choice for effective, efficient gastrointestinal endoscopy.

Versatile, high-performance gastroscope

With its outstanding image quality, the GIF-Q165 Gastrointestinal Videoscope is ready to meet a wide range of requirements in upper gastrointestinal endoscopy. The outer diameter has been decreased to 9.2 mm both at the distal end and insertion tube, improving insertion capability and making insertion into the upper gastrointestinal tract easier than any other scope in its class. As a result, procedures are easier for you and more comfortable for your patient. And, despite this versatile scope's slim design, it still incorporates a 2.8 mm diameter instrument channel to facilitate therapeutic and suction capabilities.

Slim Design



Outstanding, full-feature colonoscope

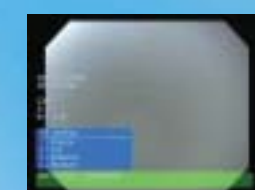
Providing high image quality on a full-height display, the CF-Q165L/I Colonovideoscope is the ideal all-purpose scope for lower gastrointestinal endoscopy. Equipped with an auxiliary water jet function to remove mucus and debris inside the colon, the CF-Q165L/I ensures a clear view at all times. Simply press the button on the scope or the footswitch unit to flush the colon. For optimum therapeutic and suction capabilities, this scope is also equipped with a big 3.7 mm diameter instrument channel.

Water Jet



Scope ID function

An easy way to keep track of your scopes and retain preferred settings. Each EVIS EXERA II scope incorporates a memory chip that can store model numbers, serial numbers, basic specifications, and white balance settings. Whenever the scope is connected to the video processor, the stored data is automatically uploaded and settings are automatically adjusted accordingly.

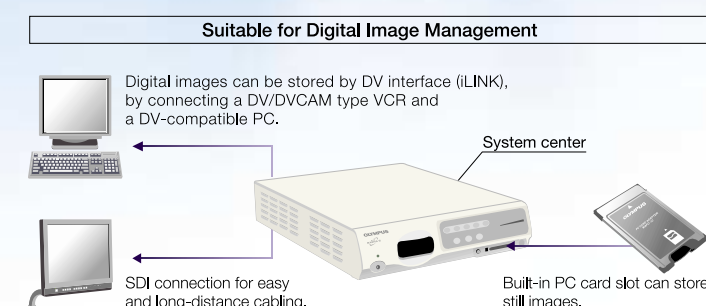


Start-up display

Digital output, annotation function, index display, and compatibility with other systems make this system a truly practical choice

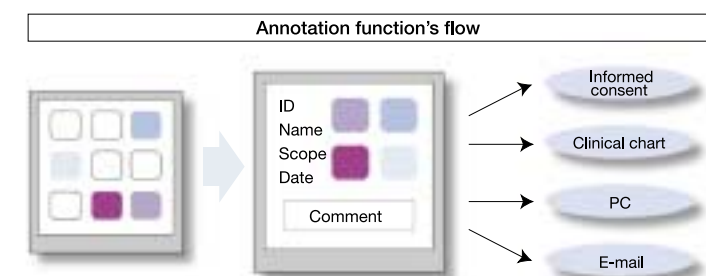
Digital output

Your data is important. That's why EVIS EXERA II offers several different ways to store or transfer that data. There's a built-in PC card slot so you can store still images on convenient, removable media. And a DV interface (LINK) that transfers images to a DV/DVCAM type VCR or DV-compatible PC.



Annotation function

You can add annotations to still images via the processor's keyboard, and print them out or save them as html files without affecting the original image. Once you've completed an examination, you can preview images on the monitor and select the ones you want to print. Scope ID and processor data are added automatically.



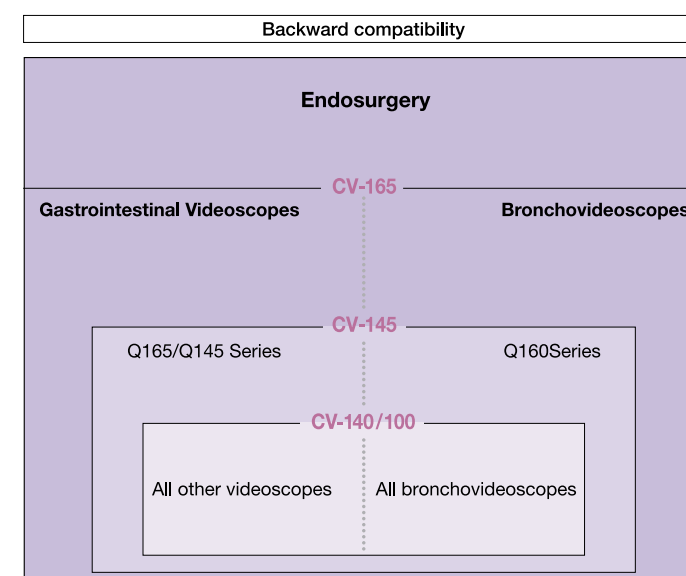
Index display

When you take a picture, the recorded image will remain displayed in the lower left corner of the screen until another picture is taken. This makes it easy to keep track of images have already shot.



Compatibility with other specialty systems

The versatility of the EVIS EXERA II 165 Series system extends beyond gastrointestinal endoscopy. It offers backward compatibility with the preceding EVIS 100, 140, and 145 Series systems and can also be used in bronchoscopy.



EVIS
EXERA II

OLYMPUS®

Your Vision, Our Future

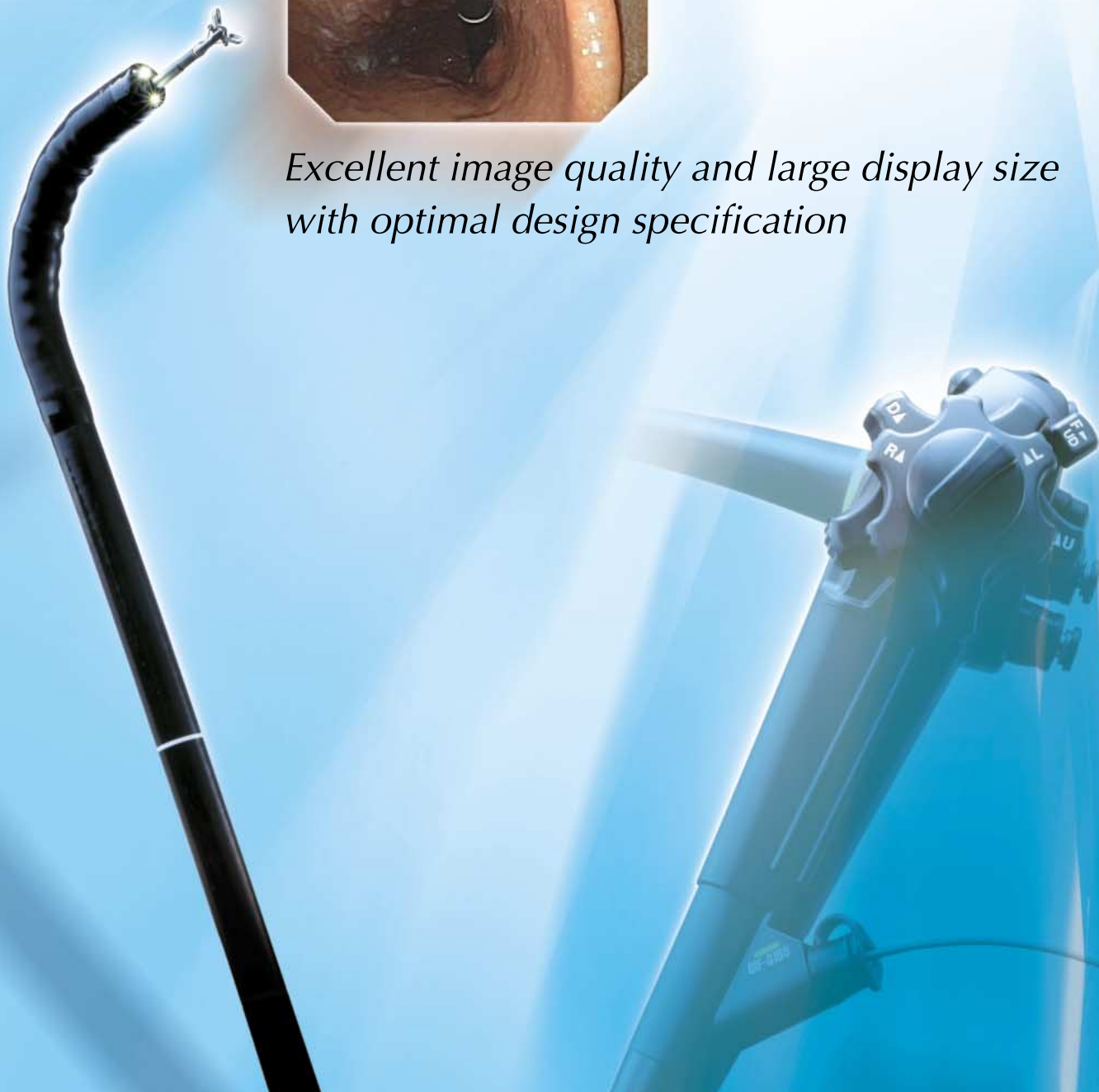
EVIS EXERA II GASTROINTESTINAL VIDEOSCOPE

OLYMPUS GIF TYPE Q165

EVIS
EXERA II



*Excellent image quality and large display size
with optimal design specification*



EVIS EXERA II GASTROINTESTINAL VIDEOSCOPE OLYMPUS GIF TYPE Q165

Main Features

- Clear, sharp, high-quality images in a large-size display that clearly shows subtle textures and fine capillaries inside the upper gastrointestinal tract.
- Slim 9.2 mm diameter distal end and insertion tube for excellent insertion capability.
- Wide 140° field of view enables accurate observation of a wide area.
- A 2.8 mm diameter instrument channel enables the use of a wide range of endo therapy accessories.
- 4-way angulation (210° up, 90° down, and 100°right/left) enables complete and comprehensive examination of the upper gastrointestinal tract.
- Easy-to access buttons and user programmable switches improve operability.
- Fully compatible with the CV-160/145/140.

- Scope ID function stores individual scope information in the built-in memory chip and displays it on the monitor, facilitating endoscopy suite management.

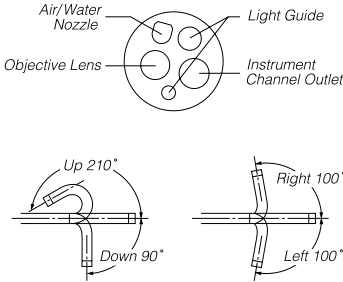


Start-up display



Specifications

Optical System	Field of view	140°
	Direction of view	Forward viewing
	Depth of field	3 to 100 mm
Distal End	Outer diameter	9.2 mm
Insertion Tube	Outer diameter	9.2 mm
Bending Section	Angulation range	Up 210°, Down 90°, Right 100°, Left 100°
Working Length		1030 mm
Total Length		1345 mm
Instrument Channel	Inner diameter	2.8 mm
	Minimum visible distance	3 mm from the distal end
	Endo therapy accessory entrance/exit position in field of view	



Specifications, design and accessories are subject to change without any notice or obligation on the part of the manufacturer.



www.olympus.com

OLYMPUS MEDICAL SYSTEMS CORP.
Shinjuku Monolith, 3-1 Nishi-Shinjuku 2-chome, Shinjuku-ku, Tokyo 163-0914, Japan
OLYMPUS MEDICAL SYSTEMS EUROPA GMBH
Postfach 10 49 08, 20034 Hamburg / Wendenstrasse 14-18, 20097 Hamburg, Germany
OLYMPUS AMERICA INC.
2 Corporate Center Drive, Melville, N.Y. 11747-3157, U.S.A.
OLYMPUS LATIN AMERICA, INC.
6100 Blue Lagoon Drive, Suite 390 Miami, Florida 33126-2087, U.S.A
KEYMED LTD.
Keymed House, Stock Road, Southend-on-Sea, Essex SS2 5QH, England

OLYMPUS SINGAPORE PTE LTD.
491B River Valley Road #12-01/04, Valley Point Office Tower, Singapore 248373
OLYMPUS HONG KONG AND CHINA LIMITED
Room 1520-1527, Ocean Centre, 5 Canton Road, Tsimshatsui, Kowloon, Hong Kong
OLYMPUS (BEIJING) SALES & SERVICE CO., LTD.
Room 1401, East Tower, Gong Yuan No6 Royal Palace, No6 Gong YuanXijie, JianGuoMenNei, DongCheng District, Beijing, 100005, China
OLYMPUS MOSCOW LIMITED LIABILITY COMPANY
117071, Moscow, Malaya Kaluzhskaya 19, bld. 1, fl.2, Russia
OLYMPUS AUSTRALIA PTY LTD
31 Gilby Road, Mount Waverley, VIC., 3149, Australia

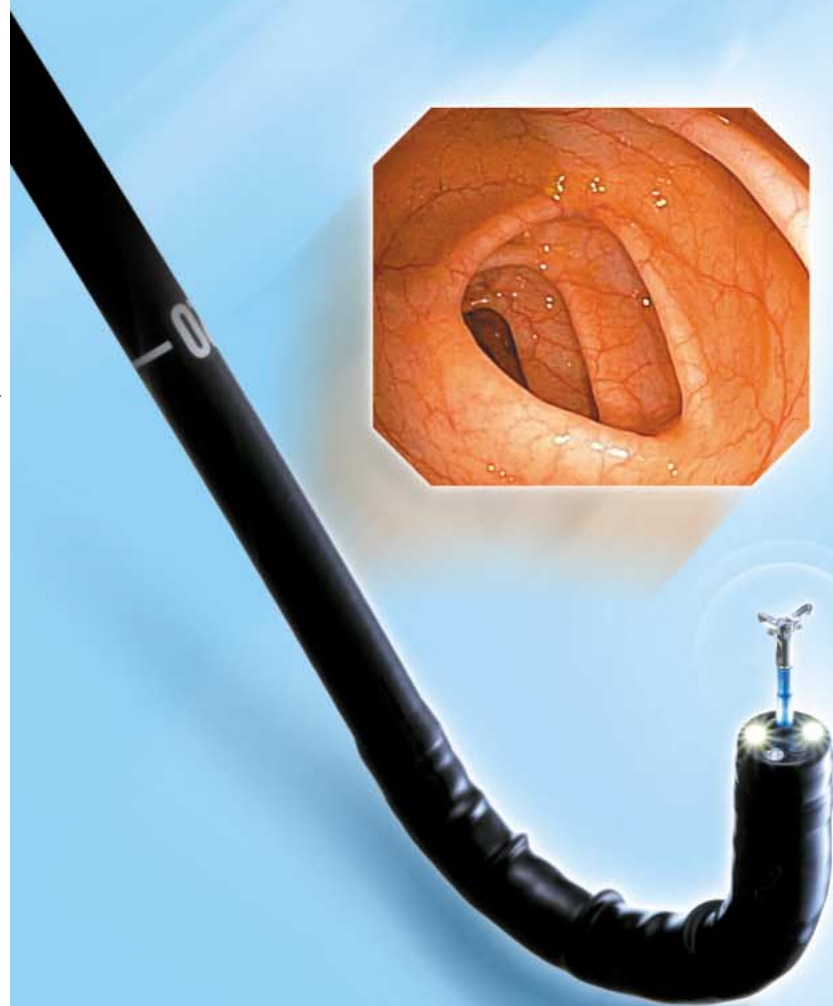
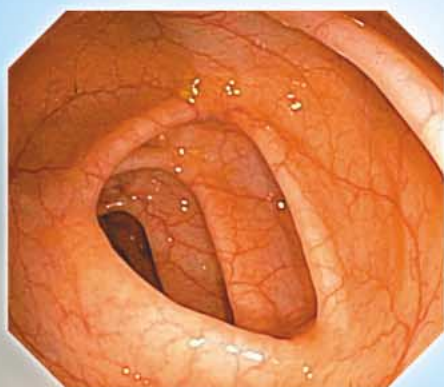
OLYMPUS®

Your Vision, Our Future

EVIS EXERA II COLONOVideoscope

OLYMPUS CF TYPE Q165L/I

EVIS
EXERA II



*Versatile colonoscope combining
high image quality, large-size display,
powerful treatment capability,
and scope ID function*

EVIS EXERA II COLONOVideoscope OLYMPUS CF TYPE Q165L/I

Main Features

- Clear, sharp, high-quality images in large-size display accurately depict subtle texture and fine capillaries inside the colon.
- Generous 3.7mm diameter instrument channel accommodates a wide range of endo therapy accessories while preserving satisfactory suction capability.
- Auxiliary water jet can be combined with dedicated flushing pump, enabling removal of mucus and debris in the colon at the touch of a button on the scope or on the footswitch unit.
- 12.8 mm diameter along the entire insertion tube.
- Wide-ranging 4-way angulation (180° up/down and 160° right/left) for comprehensive examination of the colon.
- Easy-to access buttons and user programmable switches improve operability.
- Fully compatible with the CV-160/145/140.



- Scope ID function stores individual scope information in the built-in memory chip and displays it on the monitor, facilitating endoscopy suite management.

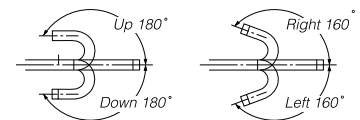
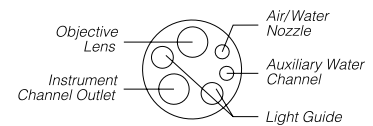


Start-up display



Specifications

Optical System	Field of view	140°
	Direction of view	Forward viewing
	Depth of field	3 to 100 mm
Distal End	Outer diameter	12.8 mm
Insertion Tube	Outer diameter	12.8mm
Bending Section	Angulation range	Up 180°, Down 180°, Right 160°, Left 160°
Working Length		L:1680 mm, I:1330 mm
Total Length		L:2000 mm, I:1650 mm
Instrument Channel	Inner diameter	3.7 mm
	Minimum visible distance	5 mm from the distal end
	Endo therapy accessory entrance/exit position in field of view	



Specifications, design and accessories are subject to change without any notice or obligation on the part of the manufacturer.

OLYMPUS

www.olympus.com

OLYMPUS MEDICAL SYSTEMS CORP.
Shinjuku Monolith, 3-1 Nishi-Shinjuku 2-chome, Shinjuku-ku, Tokyo 163-0914, Japan
OLYMPUS MEDICAL SYSTEMS EUROPA GMBH
Postfach 10 49 08, 20034 Hamburg / Wendenstrasse 14-18, 20097 Hamburg, Germany
OLYMPUS AMERICA INC.
2 Corporate Center Drive, Melville, N.Y. 11747-3157, U.S.A.
OLYMPUS LATIN AMERICA, INC.
6100 Blue Lagoon Drive, Suite 390 Miami, Florida 33126-2087, U.S.A
KEYMED LTD.
Keymed House, Stock Road, Southend-on-Sea, Essex SS2 5QH, England

OLYMPUS SINGAPORE PTE LTD.
491B River Valley Road #12-01/04, Valley Point Office Tower, Singapore 248373
OLYMPUS HONG KONG AND CHINA LIMITED
Room 1520-1527, Ocean Centre, 5 Canton Road, Tsimshatsui, Kowloon, Hong Kong
OLYMPUS (BEIJING) SALES & SERVICE CO., LTD.
Room 1401, East Tower, Gong Yuan No6 Royal Palace, No6 Gong YuanXijie, JianGuoMenNei, DongCheng District, Beijing, 100005, China
OLYMPUS MOSCOW LIMITED LIABILITY COMPANY
117071, Moscow, Malaya Kaluzhskaya 19, bld. 1, fl.2, Russia
OLYMPUS AUSTRALIA PTY LTD
31 Gilby Road, Mount Waverley, VIC., 3149, Australia